

REMOTE SEAL TYPE DIFFERENTIAL PRESSURE TRANSMITTER

DATA SHEET

FKD...5

The FCX-AIII differential pressure transmitter accurately measures differential pressure, liquid level or gauge pressure and transmits a proportional 4 to 20mA signal. The transmitter utilizes a unique micromachined capacitance silicon sensor with state-of-the-art microprocessor technology to provide exceptional performance and functionality. Totally welded construction of the seals assures excellent reliability in high temperature and highly corrosive process conditions.

FEATURES

- High accuracy**
0.2% accuracy for all calibrated spans is a standard feature for all DP models covering 0.32kPa {3.2mbar} range to 500kPa {5bar} high differential pressure range. 0.1% accuracy is available as option. Fuji's micro-capacitance silicon sensor assures this accuracy for all elevated or suppressed calibration ranges without additional adjustment.
- Minimum environmental influence**
The "Advanced Floating Cell" design which protects the pressure sensor against changes in temperature, static pressure, and overpressure substantially reduces total measurement error in actual field applications.
- Fuji/HART® bilingual communications protocol and FOUNDATION™ fieldbus and Profibus™ compatibility**
FCX-AIII series transmitter offers bilingual communications to speak both Fuji proprietary protocol and HART®. Any HART® compatible devices can communicate with FCX-AIII. Further, by upgrading electronics FOUNDATION™ fieldbus and Profibus™ are also available.
- Application flexibility**
Various options that render the FCX-AIII suitable for almost any process applications include:
 - Full range of hazardous area approvals
 - Built-in RFI filter and lightning arrester
 - 5-digit LCD meter with engineering unit
 - Stainless steel electronics housing
 - Wide selection of materials
 - High temperature, high vacuum seals
- Programmable output Linearization Function**
In addition to Linear and Square Root, output signal can be freely programmable.
(Up to 14 compensated points at approximation.)
- Burnout current flexibility (Under Scale: 3.2 to 4.0mA, Over Scale: 20.0 to 21.6mA)**
Burnout signal level is adjustable using Model FXW Hand Held Communicator (HHC) to comply with NAMUR NE43.
- Dry calibration without reference pressure**
Thanks to the best combination of unique construction of mechanical parts (Sensor unit) and high performance electronics circuit (Electronics unit), reliability of dry calibration without reference pressure is at equal level as wet calibration.



SPECIFICATIONS

Functional specifications

Service: Liquid, gas, or vapour

Static pressure, span, and range limit:

Type	Static pressure	Span limit [kPa] (m bar)		Range limit [kPa] (m bar)
		Min.	Max.	
FKD□□3	Up to flange rating	0.32	32	+/- 32
		{ 3.2 }	{ 320 }	{+/- 320}
FKD□□5		1.3	130	+/- 130
		{ 13 }	{ 1300 }	{+/- 1300}
FKD□□6		5	500	+/- 500
		{ 50 }	{ 5000 }	{+/- 5000}

Remark : To minimize environmental influence, span should be greater than 1/40 of the max. span in most applications.

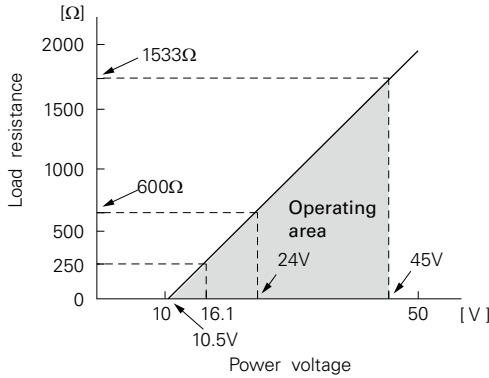
- Lower limit of static pressure (vacuum limit),
Silicone fill sensor: See Fig. 1
Fluorinated fill sensor: Atmospheric pressure
- The maximum span of each sensor can be converted to different units using factors as below.
1MPa = 10³kPa = 10bar = 10.19716kgf/cm² = 145.0377psi
1kPa = 10mbar = 101.976mmH₂O = 4.01463H₂O

Overrange limit: To maximum static pressure limit

Output signal: 4 to 20mA DC (linear or square root) with digital signal superimposed on the 4 to 20mA signal

Power supply: Transmitter operates on 10.5V to 45V DC at transmitter terminals.
10.5V to 32V DC for the units with optional arrester.

Load limitations: see figure below



Note: For communication with HHC⁽¹⁾ (Model: FXW), min. of 250Ω is required.

Hazardous locations: TABLE 2

Zero/span adjustment:

Zero and span are adjustable from the HHC⁽¹⁾. Zero and span are also adjustable externally from the adjustment screw (span adjustment is not available with 9th digit code "L, P, M, Q, S, N").

Damping:

Adjustable from HHC or local configurator unit with LCD display. The time constant is adjustable between 0 to 32 seconds.

Zero elevation/suppression:

-100% to +100% of URL

Normal/reverse action:

Selectable from HHC⁽¹⁾

Indication:

Analog indicator or 5-digit LCD meter, as specified.

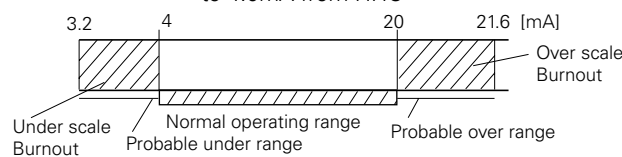
Burnout direction: Selectable from HHC⁽¹⁾

If self-diagnostic detect transmitter failure, the analog signal will be driven to either "Output Hold", "Output Overscale" or "Output Underscale" modes.

"Output Hold": Output signal is hold as the value just before failure happens.

"Output Overscale": Adjustable within the range 20.0mA to 21.6mA from HHC⁽¹⁾

"Output Underscale": Adjustable within the range 3.2mA to 4.0mA from HHC⁽¹⁾



Output limits conforming to NAMUR NE43 by order.

Loop-check output:

Transmitter can be configured to provide constant signal 3.2mA through 21.6mA by HHC⁽¹⁾.

Temperature limit:

Ambient: -40 to +85°C

(-20 to +80°C for LCD indicator)

(-40 to +60°C for arrester option)

(-10 to +60°C for fluorinated oil fill transmitter)

(-10 to +85°C for silicone oil "H", "S", "K")

(+20 to +85°C for silicone oil "J", "T")

For explosionproof units (flameproof or intrinsic safety), ambient temperature must be within the limits specified in each standard.

Process:

Fill fluid	Code in the 13th digit of "Code symbols"	Process temperature	Lower limit of static press.
Fluorinated oil	W, A and D	-20 to 120°C	Atmospheric pressure
Silicone oil	H	-15 to 250°C	
	J	20 to 300°C	
	Y and G	-40 to 180°C	
	S	-15 to 250°C	
	T	20 to 300°C	2.7kPa abs (20mmHg abs)
	K	-15 to 200°C	0.13kPa abs (1mmHg abs) or more

Storage: -40 to +90°C

Humidity limit: 0 to 100% RH

Communication: With HHC⁽¹⁾ (Model FXW, consult Data Sheet No. EDS8-47), following items can be remotely displayed or configured.

Note: HHC's version must be higher than 7.0 (or FXW □□□□1-□4), for FCX-AIII.

Local configurator with LCD display (option):

Local configurator with 3 push button and LCD display can support following items.

Items	By communication with FXW		By local configurator (with 3 push button)	
	Display	Set	Display	Set
Tag No.	✓	✓	✓	✓
Model No.	✓	✓	✓	✓
Serial No. & Software Version	✓	—	✓	—
Engineering unit	✓	✓	✓	✓
Range limit	✓	—	✓	—
Measuring range	✓	✓	✓	✓
Damping	✓	✓	✓	✓
Output mode	Linear	✓	✓	✓
	Square root	✓	✓	✓
Burnout direction	✓	✓	✓	✓
Calibration	✓	✓	✓	✓
Output adjust	—	✓	—	✓
Data	✓	—	✓	—
Self diagnoses	✓	—	✓	—
Printer (In case of FXW with printer option)	✓	—	—	—
External switch lock	✓	✓	✓	✓
Transmitter display	✓	✓	✓	✓
Linearize	✓	✓	—	—
Rerange	✓	✓	✓	✓
Saturate current	✓	✓	✓	✓
Write protect	✓	✓	✓	✓
History	—	✓	—	✓
	—	✓	—	✓

Programmable output linearization function:

Output signal can be characterized with "14 points linear approximation function" from HHC⁽¹⁾.

EMC Conformity: EN61326 CE

(Note) (1) HHC: Hand Held Communicator

Performance specifications

Reference conditions, silicone oil fill, 316SS isolating diaphragms, 4 to 20mA analog output in linear mode.

Accuracy rating: (including linearity, hysteresis, and repeatability)

(Standard)

For spans greater than $1/10$ of URL: 0.2% of span

For spans below $1/10$ of URL:

$$\pm \left(0.1 + 0.1 \frac{0.1 \times \text{URL}}{\text{Span}} \right) \% \text{ of span}$$

(Option) (Code; 21th digit H,K)

For spans greater than $1/10$ of URL: 0.1% of span

For spans below $1/10$ of URL:

$$\pm \left(0.05 + 0.05 \frac{0.1 \times \text{URL}}{\text{Span}} \right) \% \text{ of span}$$

Stability: $\pm 0.2\%$ of upper range limit (URL) for 10 years.

Temperature effect (*):

Effects per 28°C change between the limits of -40°C and $+85^\circ\text{C}$

(Standard) Zero shift: $\pm 0.35\%$ of URL

Total effect: $\pm 0.5\%$ of URL

(Option) (Code; 21th digit J,K)

Zero shift: $\pm 0.3\%$ of URL

Total effect: $\pm 0.4\%$ of URL

Note: * Excluding effect by temperature difference between the seals.

Static pressure effect:

Zero shift; 0.2% of URL / 1MPa

Span shift: -0.2% of calibrated span / 1MPa

Overrange effect: Zero shift; 0.1% of URL for flange rating pressure

Supply voltage effect:

Less than 0.005% fo calibrated span per 1V

Update rate: 60 msec

Step response: (without electrical damping)

Range code	Time constant (at 23°C)	Dead time
"3"	2 s	0.12 s
"5"	1.7 s	
"6"	1.7 s	

Dielectric strength:

500V AC, 50/60Hz 1 min., between circuit and earth.

Insulation resistance:

More than $100\text{M}\Omega$ at 500V DC.

Internal resistance for external field indicator:

12Ω or less

Physical specifications

Electrical connections:

$G^{1/2}$, $1/2$ -14 NPT, Pg13.5, or $M20 \times 1.5$ conduit, as specified. (1 conduit)

Process connections:

JIS, ANSI, or DIN raised face flanges.

JIS: 10K80A, 10K100A, 30K80A, or 30K100A

ANSI: 150LB 3", 150LB 4", 300LB 3", or 300LB 4"

DIN: PN40 DN80 or PN16 DN100

See OUTLINE DIAGRAM for detailed dimensions.

Diaphragm extension:

0, 50, 100, 150, or 200mm as specified.

(See model code. Extended diaphragm is available only with 316L stainless steel or Hastelloy-C diaphragm)

Process-wetted parts material:

Diaphragm: 316L stainless steel, Hastelloy-C, Monel, Tantalum, Titanium or Zirconium

Flange face: 316 stainless steel, Hastelloy-C lining
Monel lining, or Tantalum lining

Extension: 316 stainless steel or Hastelloy-C

Non-wetted parts material:

Electronics housing: Low copper die-cast aluminum alloy finished with polyester coating (standard), or 316 stainless steel (ASTM CF8M), as specified.

Capillary: In case of 11th code "D, E, F, L, M, N, P", PVC armored stainless steel.
In case of 13th code "Q, R, S, T, V, W, X", stainless steel armored stainless steel.

Mounting flange: 304 stainless steel or carbon steel

Fill fluid: Silicone oil (standard) or fluorinated oil

Mounting bracket: 304 stainless steel

Environmental protection:

IEC IP67 and NEMA 6/6P

Mounting:

On 60.5mm (JIS 50A) pipe using mounting bracket, direct wall mounting

Mass {weight}:

Transmitter approximately 12 to 31kg without options.

Add; 0.5kg for mounting bracket

4.5kg for stainless steel housing option

1.5kg per 50mm extension of diaphragm

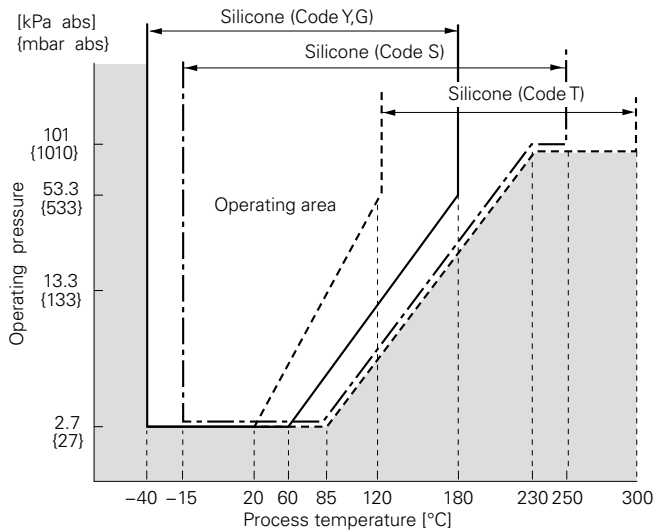


Fig. 1 Relation between process temperature and operating pressure

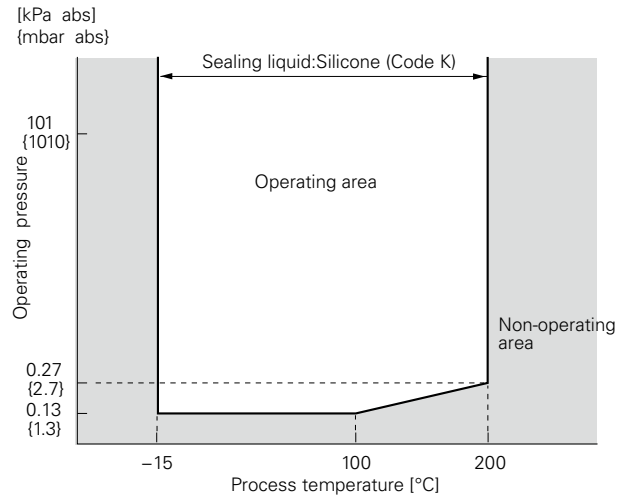


Fig. 2 Relation between process temperature and operating pressure

Optional features

Indicator: A plug-in analog indicator (2.5% accuracy).
An optional 5-digit LCD meter with engineering unit is also available.

Local configurator with LCD display:
An optional 5 digits LCD meter with 3 push buttons can support items as using communication with FXW.

Arrester: A built-in arrester protects the electronics from lightning surges.
Lightning surge immunity:
4kV (1.2 × 50μs)

Oxygen service: Special cleaning procedures are followed throughout the process to maintain all process wetted parts oil-free.
The fill fluid is fluorinated oil.

Chlorine service: Oil-free procedures as above. Includes fluorinated oil for fill.

Degreasing: Process-wetted parts are cleaned, but the fill fluid is standard silicone oil. Not for use on oxygen or chlorine measurement.

Vacuum service: Special silicone oil and filling procedure are applied.
See Fig. 1, Fig. 2.

Optional tag plate:
An extra stainless steel tag for customer tag data is wired to the transmitter.

Coating of cell: Cell's surface is finished with epoxy/polyurethane double coating. Specify if environment is extremely corrosive.

ACCESSORIES

Hand-held communicator:
(Model FXW, refer to Data Sheet No. EDS 8-47)

CODE SYMBOLS

Digit	Description	Note	1	2	3	4	5	6	7	8	9	10	11	12	13	14	15	21	← Digit No. of code																																			
4	<Connections> <Conduit connection> <Case type> G1/2 T type 1/2-14NPT T type Pg 13.5 T type M20 × 1.5 T type ----- G1/2 L type 1/2-14NPT L type Pg 13.5 L type M20 × 1.5 L type		F	K	D			5									0																																					
5	<Flange> <table border="1"> <thead> <tr> <th>Mounting flange</th> <th>Flange size and rating</th> </tr> </thead> <tbody> <tr> <td rowspan="10">304 stainless steel</td> <td>JIS 10K 80A</td> </tr> <tr> <td>JIS 10K 100A</td> </tr> <tr> <td>JIS 30K 80A</td> </tr> <tr> <td>JIS 30K 100A</td> </tr> <tr> <td>ANSI/JPI 150LB 3"</td> </tr> <tr> <td>ANSI/JPI 150LB 4"</td> </tr> <tr> <td>ANSI/JPI 300LB 3"</td> </tr> <tr> <td>ANSI/JPI 300LB 4"</td> </tr> <tr> <td>DIN PN16/40 DN80</td> </tr> <tr> <td>DIN PN16 DN100</td> </tr> <tr> <td rowspan="10">Carbon steel</td> <td>JIS 10K 80A</td> </tr> <tr> <td>JIS 10K 100A</td> </tr> <tr> <td>JIS 30K 80A</td> </tr> <tr> <td>JIS 30K 100A</td> </tr> <tr> <td>ANSI/JPI 150LB 3"</td> </tr> <tr> <td>ANSI/JPI 150LB 4"</td> </tr> <tr> <td>ANSI/JPI 300LB 3"</td> </tr> <tr> <td>ANSI/JPI 300LB 4"</td> </tr> <tr> <td>DIN PN16/40 DN80</td> </tr> <tr> <td>DIN PN16 DN100</td> </tr> <tr> <td rowspan="6">316 stainless steel</td> <td>JIS 10K 80A</td> </tr> <tr> <td>ANSI/JPI 150LB 3B</td> </tr> <tr> <td>ANSI/JPI 150LB 4B</td> </tr> <tr> <td>ANSI/JPI 300LB 3B</td> </tr> <tr> <td>ANSI/JPI 300LB 4B</td> </tr> <tr> <td>ANSI/JPI 600LB 3B</td> </tr> <tr> <td rowspan="2">None (wafer type)</td> <td>3 inch wafer</td> </tr> <tr> <td>4 inch wafer</td> </tr> </tbody> </table>	Mounting flange	Flange size and rating	304 stainless steel	JIS 10K 80A	JIS 10K 100A	JIS 30K 80A	JIS 30K 100A	ANSI/JPI 150LB 3"	ANSI/JPI 150LB 4"	ANSI/JPI 300LB 3"	ANSI/JPI 300LB 4"	DIN PN16/40 DN80	DIN PN16 DN100	Carbon steel	JIS 10K 80A	JIS 10K 100A	JIS 30K 80A	JIS 30K 100A	ANSI/JPI 150LB 3"	ANSI/JPI 150LB 4"	ANSI/JPI 300LB 3"	ANSI/JPI 300LB 4"	DIN PN16/40 DN80	DIN PN16 DN100	316 stainless steel	JIS 10K 80A	ANSI/JPI 150LB 3B	ANSI/JPI 150LB 4B	ANSI/JPI 300LB 3B	ANSI/JPI 300LB 4B	ANSI/JPI 600LB 3B	None (wafer type)	3 inch wafer	4 inch wafer																			
Mounting flange	Flange size and rating																																																					
304 stainless steel	JIS 10K 80A																																																					
	JIS 10K 100A																																																					
	JIS 30K 80A																																																					
	JIS 30K 100A																																																					
	ANSI/JPI 150LB 3"																																																					
	ANSI/JPI 150LB 4"																																																					
	ANSI/JPI 300LB 3"																																																					
	ANSI/JPI 300LB 4"																																																					
	DIN PN16/40 DN80																																																					
	DIN PN16 DN100																																																					
Carbon steel	JIS 10K 80A																																																					
	JIS 10K 100A																																																					
	JIS 30K 80A																																																					
	JIS 30K 100A																																																					
	ANSI/JPI 150LB 3"																																																					
	ANSI/JPI 150LB 4"																																																					
	ANSI/JPI 300LB 3"																																																					
	ANSI/JPI 300LB 4"																																																					
	DIN PN16/40 DN80																																																					
	DIN PN16 DN100																																																					
316 stainless steel	JIS 10K 80A																																																					
	ANSI/JPI 150LB 3B																																																					
	ANSI/JPI 150LB 4B																																																					
	ANSI/JPI 300LB 3B																																																					
	ANSI/JPI 300LB 4B																																																					
	ANSI/JPI 600LB 3B																																																					
None (wafer type)	3 inch wafer																																																					
	4 inch wafer																																																					
6	 0.32..... 32 {3.2..... 320} 1.3..... 130 {13..... 1300} 5..... 500 {50..... 5000}	Note 1								3																																												
										5																																												
										6																																												
7	<Material/diaphragm extension> <table border="1"> <thead> <tr> <th>Diaphragm</th> <th>Flange face</th> <th>Diaph. extension [mm]</th> </tr> </thead> <tbody> <tr> <td rowspan="5">316L stainless steel</td> <td rowspan="5">316 stainless steel</td> <td>0</td> </tr> <tr> <td>50</td> </tr> <tr> <td>100</td> </tr> <tr> <td>150</td> </tr> <tr> <td>200</td> </tr> <tr> <td rowspan="5">Hastelloy-C</td> <td rowspan="5">Hastelloy-C</td> <td>0</td> </tr> <tr> <td>50</td> </tr> <tr> <td>100</td> </tr> <tr> <td>150</td> </tr> <tr> <td>200</td> </tr> <tr> <td rowspan="7">316L stainless +Au coating Hastelloy-C Monel Tantalum Titanium Zirconium</td> <td>316 stainless stell</td> <td>0</td> </tr> <tr> <td>316 stainless stell</td> <td>0</td> </tr> <tr> <td>Monel</td> <td>0</td> </tr> <tr> <td>Tantalum</td> <td>0</td> </tr> <tr> <td>Titanium</td> <td>0</td> </tr> <tr> <td>Zirconium</td> <td>0</td> </tr> <tr> <td></td> <td>0</td> </tr> </tbody> </table>	Diaphragm	Flange face	Diaph. extension [mm]	316L stainless steel	316 stainless steel	0	50	100	150	200	Hastelloy-C	Hastelloy-C	0	50	100	150	200	316L stainless +Au coating Hastelloy-C Monel Tantalum Titanium Zirconium	316 stainless stell	0	316 stainless stell	0	Monel	0	Tantalum	0	Titanium	0	Zirconium	0		0	Note 2																				
Diaphragm	Flange face	Diaph. extension [mm]																																																				
316L stainless steel	316 stainless steel	0																																																				
		50																																																				
		100																																																				
		150																																																				
		200																																																				
Hastelloy-C	Hastelloy-C	0																																																				
		50																																																				
		100																																																				
		150																																																				
		200																																																				
316L stainless +Au coating Hastelloy-C Monel Tantalum Titanium Zirconium	316 stainless stell	0																																																				
	316 stainless stell	0																																																				
	Monel	0																																																				
	Tantalum	0																																																				
	Titanium	0																																																				
	Zirconium	0																																																				
		0																																																				
		Note 3																																																				
8																			5																																			

Note 1: (*1) 100: 1 turn down is possible, but should be used at a span greater than 1/40 of the maximum span for better performance.

Note 2: (*2) Available for 13th digit code "S", "T", "K" and 5th digit code "1", "3", "5", "7", "B", "D", "F", "H", "K", "Q", "U", "W".

Note 3: (*3) Available for 6th code "2", "3" and 5th code "0", "2", "4", "6", "8", "A", "C", "E", "G", "J", "P", "M", "R", "S", "T", "W".

Digit	Description	Note	Digit No. of code																		
			1	2	3	4	5	6	7	8	9	10	11	12	13	14	15	21			
9	<Indicator and arrester>		F	K	D				5												
	<u>Indicator</u>	<u>Arrester</u>																			
	None	None								A											
	Analog, 0 to 100% linear scale	None								B											
	Analog, 0 to 100% sq. root scale (*7)	None	Note 7							C											
	Analog, custom scale	None								D											
	Analog, double scale (linear and sq. root)	None								J											
	None	Yes								E											
	Analog, 0 to 100% linear scale	Yes								F											
	Analog, 0 to 100% sq. root scale (*7)	Yes	Note 7							G											
	Analog, custom scale	Yes								H											
	Analog, double scale (linear and sq. root)	Yes								K											
	Digital, 0 to 100%	None								L											
	Digital, custom scale	None								P											
	Digital, 0 to 100% square root	None								M											
	Digital, 0 to 100%	Yes								Q											
	Digital, custom scale	Yes								S											
	Digital, 0 to 100% square root	Yes								N											
	Digital, 0 to 100%									1											
	(Local configurator unit with LCD display)	None								2											
	Digital, custom scale									3											
	(Local configurator unit with LCD display)	None								4											
	Digital, 0 to 100% square root									5											
	(Local configurator unit with LCD display)	None								6											
Digital, 0 to 100%	Yes																				
(Local configurator unit with LCD display)	Yes																				
Digital, custom scale																					
(Local configurator unit with LCD display)	Yes																				
Digital, 0 to 100% square root	Yes																				
(Local configurator unit with LCD display)	Yes																				
10	<Approvals for hazardous locations>																				
	None (for ordinary locations)									A											
	TIIS, Flameproof (Conduit seal) (*11)		Note 11							B											
	TIIS, Flameproof (Cable gland seal) (*11)		Note 11							C											
	TIIS, Intrinsic safety									G											
	FM, Flameproof (or explosionproof) (*12)		Note 12							D											
	FM, Intrinsic safety and nonincensive									H											
	FM Combined of flameproof and intrinsic safety (*12)		Note 12							V											
	ATEX Flameproof (*13)		Note 13							X											
	ATEX Intrinsic safety									K											
	ATEX Type n									P											
	ATEX Combined of flameproof and intrinsic safety (*13)		Note 13							M											
	IECEX Scheme, Flameproof (*13)		Note 13							R											
	IECEX Scheme, Intrinsic safety									T											
CSA, Flameproof (or explosionproof) (*14)		Note 14							E												
CSA, Intrinsic safety and nonincensive									J												
NEPSI, Flameproof (or explosionproof) (*12)		Note 12							F												
NEPSI, Intrinsic safety (Entity)									S												
NEPSI, Combined of flameproof and intrinsic safety (*12)		Note 12							U												
11	<Capillary and mounting bracket>																				
	<u>Capillary</u>	<u>Mounting bracket</u>	<u>armor of capillary</u>																		
	1.5 m	304 Stainless steel	PVC	(*4)																	
	3	304 Stainless steel	PVC	(*4)	Note 4																
	5	304 Stainless steel	PVC	(*4)	Note 4																
	6	304 Stainless steel	PVC	(*4)	Note 4																
	7	304 Stainless steel	PVC	(*4)	Note 4																
	8	304 Stainless steel	PVC	(*4)	Note 4																
	10	304 Stainless steel	PVC	(*4)	Note 4																
	1.5	304 Stainless steel	Stainless steel	(*5)	Note 5																
	3	304 Stainless steel	Stainless steel	(*5)	Note 5																
	5	304 Stainless steel	Stainless steel	(*5)	Note 5																
	6	304 Stainless steel	Stainless steel	(*5)	Note 5																
	7	304 Stainless steel	Stainless steel	(*5)	Note 5																
	8	304 Stainless steel	Stainless steel	(*5)	Note 5																
	10	304 Stainless steel	Stainless steel	(*4)	Note 4																
12	<Options>																				
	<u>Extra SS tag plate</u>	<u>Stainless steel elec. housing</u>	<u>Coating of cell</u>																		
	None	None	None		Note 6																
	Yes	None	None																		
	None (*6)	None	Yes																		
	Yes	None	Yes																		
None	Yes (*8)	Yes		Note 8																	
Yes	Yes (*8)	Yes		Note 8																	

Note 4: (*4) Available for 13th digit code "Y, W, G, A, D".
Inquire about in case of 13th other code.

Note 5: (*5) Available for all 13th digit code.

Note 6: (*6) Customer tag number can be engraved on standard stainless steel name plate. If extra tag plate is required, select "Yes".

Note 7: (*7) In case of square root output mode, square root scale is not available.

Note 8: (*8) Available for 4th digit code "5" to "8".

Digit	Description	Note	1	2	3	4	5	6	7	8	9	10	11	12	13	14	15	21	Digit No. of code	
13	<Special applications and fill fluid> <u>Treatment</u> <u>Fill fluid</u> Standard Silicone oil Standard Fluorinated oil Degreasing Silicone oil Oxygen service Fluorinated oil (7th digit code "V", "A", "B", "C", "D" and "J") Chlorine service Fluorinated oil (7th digit code "H", "F", "G", "K", "L" and "T") High temp. 250°C Silicone oil } 7th digit code "V", "A", "B", "C", "D", "H", High temp. 300°C Silicone oil } "F", "G", "K", and "L" High temp. and vacuum (250°C) Silicone oil } (*9) High temp. and vacuum (300°C) Silicone oil } High temp. and high vacuum Silicone oil } Note 9	Note 9	F	K	D			5										0		
14	<Teflon membrane> None Yes (Available for 5th digit code "0", "2", "4", "6", "8", "A", "C", "E", "G", "J", "P", "M", "R", "S", "T", "U", "X" and 7th digit code "V", "H", "M", "T", "P", "R". Not available for the 13th digit code "H", "J", "S", "T", "K".)																Y C			
21	<Other options> (*10) High accuracy type Instruction manual attached Low temperature effect type Instruction manual attached H+J Instruction manual attached Instruction manual unattached High accuracy type Instruction manual unattached Low temperature effect type Instruction manual unattached T+U Instruction manual unattached Note 10	Note 10																		H J K L T U V

Note 9: (*9) Treatment; Standard

Note 10: (*10) If other option is not necessary, 21st digit code is blank.
In case of 21st digit code is blank, instruction manual attached.

Note 11: (*11) Available for 4th digit code "5", "S".

Note 12: (*12) Not available for 4th digit code "8", "W".

Note 13: (*13) Available for 4th digit code "6", "8", "T", "W".

Note 14: (*14) Available for 4th digit code "6", "T".

ORDERING INFORMATION

When ordering this instrument, specify:

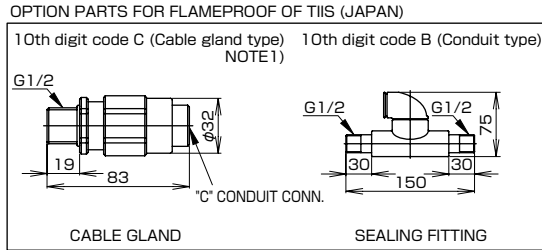
1. CODE SYMBOLS
2. Measuring range
3. Output orientation (burnout direction) when abnormality is occurred in the transmitter.
Hold / Overscale / Underscale
Unless otherwise specified, output hold function is supplied.
4. Output mode (linear or square root output)
Unless otherwise specified, output mode is linear.
5. Indication method (indicated value and unit) in case of the actual scale (code D, H, P, S on 9th digit).
6. Tag No. (up to 14 alphanumerical characters), if required.

OUTLINE DIAGRAM (Unit:mm)

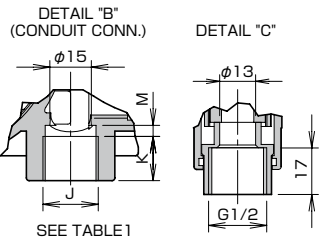
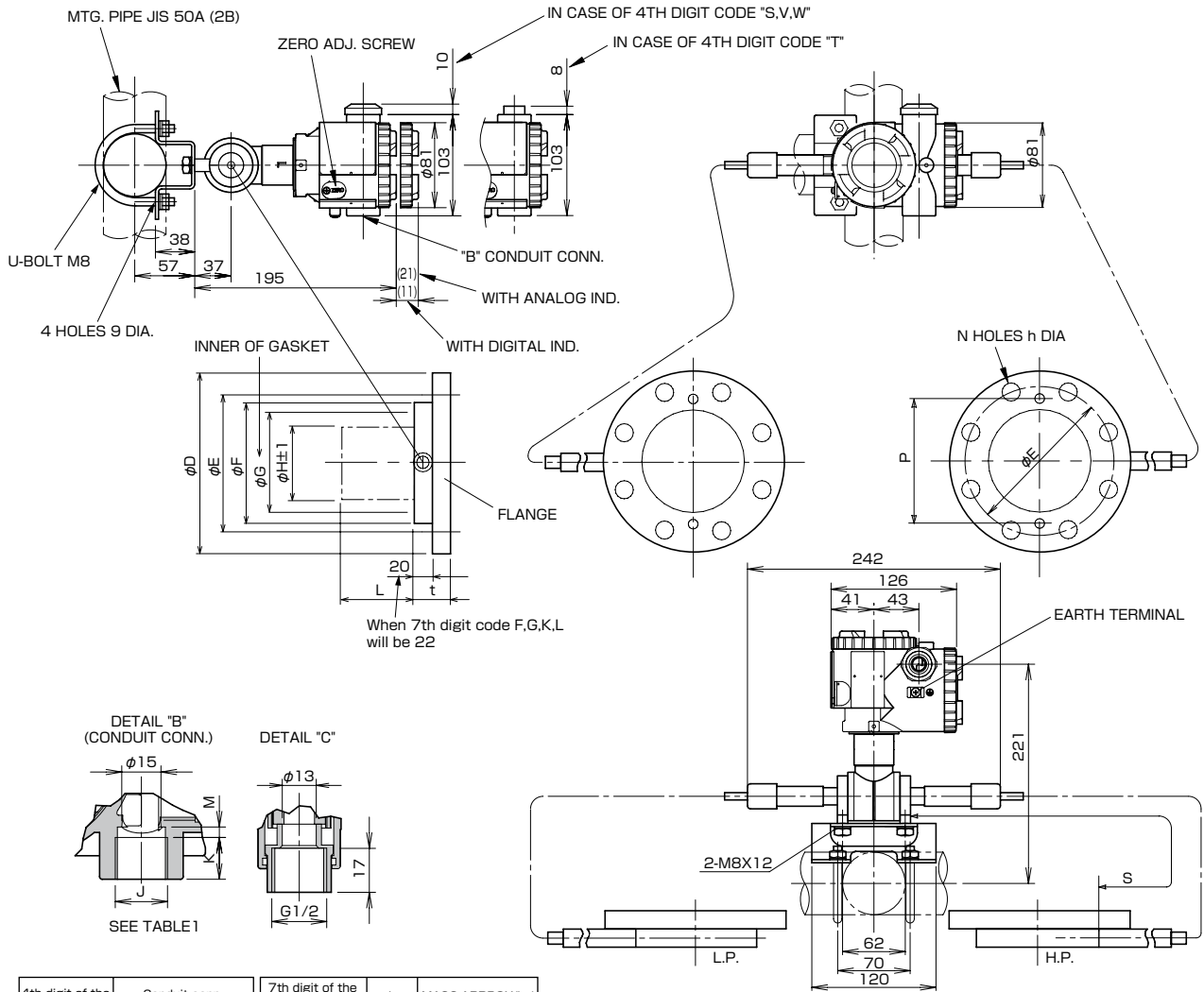
< CODE SYMBOLS : FKD

S	V
T	W

 □□□5 >



NOTE1) IN CASE OF 10TH CODE "C", φ11 CABLE IS SUITBLE.



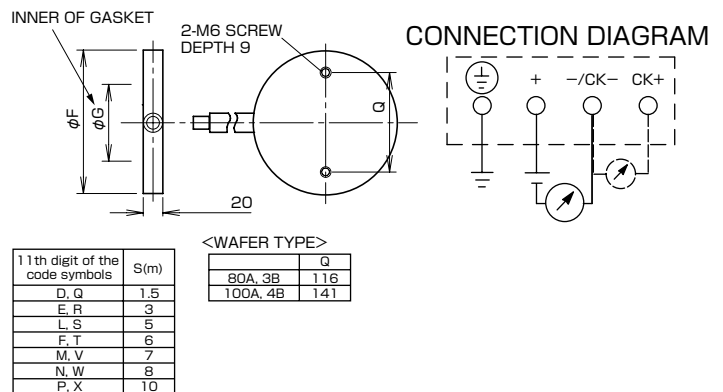
SEE TABLE 1

4th digit of the code symbols	Conduit conn.			7th digit of the code symbols	L	MASS. APPROX(kg)
	J	K	M			
S	G 1/2	18	2	V, J, H, M, T, P, R	0	12.7~18.2
T	1/2-14NPT	16	4	A, F	50	13.7~29.2
V	PG13.5	10.5	4.5	B, G	100	14.2~29.7
W	M20x1.5	16	4	C, K	150	14.7~30.2
				D, L	200	15.2~30.7

TABLE 1

NOTE) The measurements "t" will be added 2mm to each measurements in case of 7th digit of F,G,L,K.

5th digit of the code symbols	φD	φE	φF	φG	φH±1	NOTE) t	P	N-φh	FLANGE
0, A, S	185	150	126	100	73	38	116	8-19	JIS-10K-80A
M	200	160	126	100	73	42	116	8-23	JIS-20K-80A
2, C	210	170	126	100	73	48	116	8-23	JIS-30K-80A
1, B	210	175	151	103	96	38	141	8-19	JIS-10K-100A
3, D	240	195	151	103	96	52	141	8-25	JIS-30K-100A
4, E, T	191	152.5	126	100	73	44	116	4-20	ANSI 150LB 3B
6, G, V	210	168	126	100	73	49	116	8-23	ANSI 300LB 3B
R, X	210	168	126	100	73	52	116	8-23	ANSI 600LB 3B
5, F, U	229	190.5	151	103	96	44	141	8-20	ANSI 150LB 4B
7, H, W	254	200	151	103	96	52	141	8-23	ANSI 300LB 4B
8, J	200	160	126	100	73	44	116	8-18	DIN PN40 DN80
9, K	220	180	151	103	96	40	141	8-18	DIN PN16 DN100

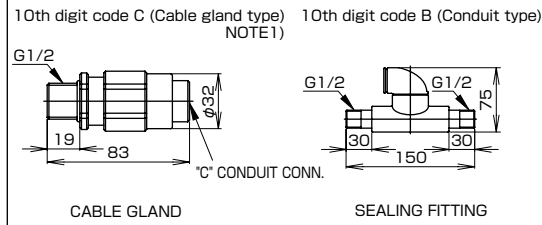


< CODE SYMBOLS : FKD

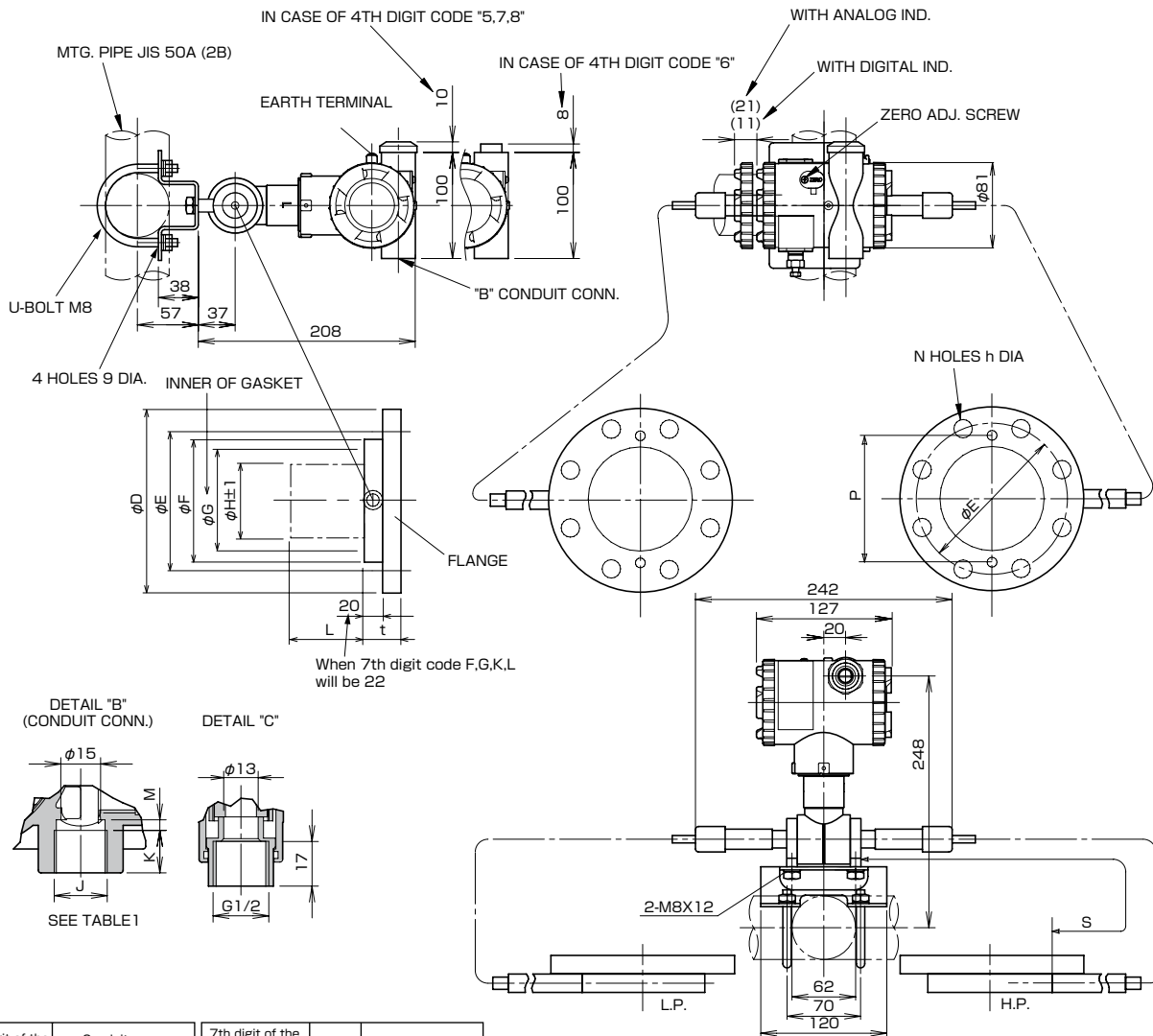
5	7			
6	8			5

 >

OPTION PARTS FOR FLAMEPROOF OF THIS (JAPAN)



NOTE1) IN CASE OF 10TH CODE "C",
φ11 CABLE IS SUITBLE.

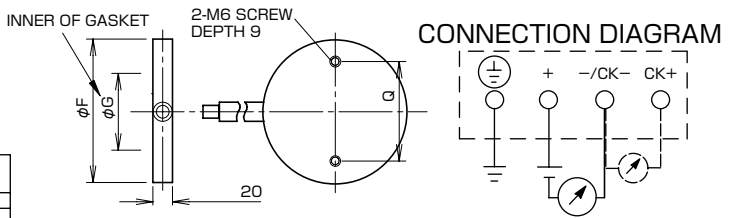


4th digit of the code symbols	Conduit conn.			7th digit of the code symbols V. J. H. M. T. P. R	L	MASS. APPROX. (kg)
	J	K	M			
5	G 1/2	18	2	A, F	50	13.7~29.2
6	1/2-14NPT	16	4	B, G	100	14.2~29.7
7	PG13.5	10.5	4.5	C, K	150	14.7~30.2
8	M20x1.5	16	4	D, L	200	15.2~30.7

TABLE 1

NOTE) The measurements "t" will be added 2mm to each measurements in case of 7th digit of F,G,L,K.

5th digit of the code symbols	φD	φE	φF	φG	φH±1	NOTE) t	P	N-φh	FLANGE
0, A, S	185	150	126	100	73	38	116	8-19	JIS-10K-80A
M	200	160	126	100	73	42	116	8-23	JIS-20K-80A
2, C	210	170	126	100	73	48	116	8-23	JIS-30K-80A
1, B	210	175	151	103	96	38	141	8-19	JIS-10K-100A
3, D	240	195	151	103	96	52	141	8-25	JIS-30K-100A
4, E, T	191	152.5	126	100	73	44	116	4-20	ANSI 150LB 3B
6, G, V	210	168	126	100	73	49	116	8-23	ANSI 300LB 3B
R, X	210	168	126	100	73	52	116	8-23	ANSI 600LB 3B
5, F, U	229	190.5	151	103	96	44	141	8-20	ANSI 150LB 4B
7, H, W	254	200	151	103	96	52	141	8-23	ANSI 300LB 4B
8, J	200	160	126	100	73	44	116	8-18	DIN PN40 DN80
9, K	220	180	151	103	96	40	141	8-18	DIN PN16 DN100



11th digit of the code symbols	S(m)
D, Q	1.5
E, R	3
L, S	5
F, T	6
M, V	7
N, W	8
P, X	10

< WAFER TYPE >

80A, 3B	116
100A, 4B	141

TABLE 2

Authorities	Intrinsic safety																					
ATEX	<p>Ex II 1 G Ex ia IIC T5 Tamb = -40°C to +50°C Ex ia IIC T4 Tamb = -40°C to +70°C</p> <p>Entity Parameters: Ui=28V, li=94.3mA, Pi=0.66W, Ci=26nF (Without Arrester), Li=0.6mH (Without analog indicator), Ci=36nF (With Arrester), Li=0.7mH (With analog indicator)</p>																					
Factory Mutual (pending)	<p>Class I II III Div.1 Groups A, B, C, D, E, F, G T4 Entity Type 4X</p> <table border="1"> <thead> <tr> <th colspan="2">Model code</th> <th>Tamb</th> </tr> <tr> <th>9th digit</th> <th>13th digit</th> <th></th> </tr> </thead> <tbody> <tr> <td>A,B,C,D,J</td> <td>Y,G,H,J,S,T,K</td> <td>-40°C to +85°C</td> </tr> <tr> <td>L,P,M,1,2,3</td> <td>Y,G,H,J,S,T,K</td> <td>-20°C to +80°C</td> </tr> <tr> <td>Q,S,N,4,5,6</td> <td>Y,G,H,J,S,T,K</td> <td>-20°C to +60°C</td> </tr> <tr> <td>E,F,G,H,K</td> <td>Y,G,H,J,S,T,K</td> <td>-40°C to +60°C</td> </tr> <tr> <td>-</td> <td>W,A,D</td> <td>-10°C to +60°C</td> </tr> </tbody> </table> <p>Entity Parameters: Vmax=42.4V, Imax=113mA, Pi=1W, Ci=35.98nF, Li=0.694mH</p>	Model code		Tamb	9th digit	13th digit		A,B,C,D,J	Y,G,H,J,S,T,K	-40°C to +85°C	L,P,M,1,2,3	Y,G,H,J,S,T,K	-20°C to +80°C	Q,S,N,4,5,6	Y,G,H,J,S,T,K	-20°C to +60°C	E,F,G,H,K	Y,G,H,J,S,T,K	-40°C to +60°C	-	W,A,D	-10°C to +60°C
Model code		Tamb																				
9th digit	13th digit																					
A,B,C,D,J	Y,G,H,J,S,T,K	-40°C to +85°C																				
L,P,M,1,2,3	Y,G,H,J,S,T,K	-20°C to +80°C																				
Q,S,N,4,5,6	Y,G,H,J,S,T,K	-20°C to +60°C																				
E,F,G,H,K	Y,G,H,J,S,T,K	-40°C to +60°C																				
-	W,A,D	-10°C to +60°C																				
CSA	<p>Class I Div.1 Groups A, B, C, D Class II Div.1 Groups E, F, G Class III Div.1</p> <p>Temp Code T5 Tamb max = +50°C Temp Code T4 Tamb max = +70°C</p> <p>Entity Parameters: Vmax=28V, Imax=94.3mA, Ci=25nF (Without Arrester), Ci=36nF (With Arrester), Li=0.6mH (Without the analog meter), Li=0.7mH (With analog meter)</p>																					
TIIS (pending)	<p>Ex ia IIC T4 Tamb max = +60°C</p> <p>Entity Parameters: Ui=28V, li=94.3mA, Pi=0.66W, Ci=38.4nF, Li=0.694mH</p>																					
IECEx Scheme	<p>Ex ia IIC T4 Tamb = -40°C to +70°C Ex ia IIC T5 Tamb = -40°C to +50°C</p> <p>Entity Parameters: Ui=28V, li=94.3mA, Pi=0.66W, Ci=26nF (Without Arrester), Li=0.6mH (Without analog indicator), Ci=36nF (With Arrester), Li=0.7mH (With analog indicator)</p>																					
NEPSI	<p>Ex ia IIC T4 Ex d IIB+H₂ T6 / Ex ia IIC T4</p> <table border="1"> <thead> <tr> <th colspan="2">Model code</th> <th>Tamb</th> </tr> <tr> <th>9th digit</th> <th>13th digit</th> <th></th> </tr> </thead> <tbody> <tr> <td>A,B,D,J</td> <td>Y,G,H,J,S,T,K</td> <td>-40°C to +85°C</td> </tr> <tr> <td>L,P,1,2</td> <td>Y,G,H,J,S,T,K</td> <td>-20°C to +80°C</td> </tr> <tr> <td>Q,S,4,5</td> <td>Y,G,H,J,S,T,K</td> <td>-20°C to +60°C</td> </tr> <tr> <td>E,F,H,K</td> <td>Y,G,H,J,S,T,K</td> <td>-40°C to +60°C</td> </tr> <tr> <td>-</td> <td>W,A,D</td> <td>-10°C to +60°C</td> </tr> </tbody> </table> <p>Entity Parameters: Ui=42.4V, li=113mA, Pi=1W, Ci=35.98nF, Li=0.694mH</p>	Model code		Tamb	9th digit	13th digit		A,B,D,J	Y,G,H,J,S,T,K	-40°C to +85°C	L,P,1,2	Y,G,H,J,S,T,K	-20°C to +80°C	Q,S,4,5	Y,G,H,J,S,T,K	-20°C to +60°C	E,F,H,K	Y,G,H,J,S,T,K	-40°C to +60°C	-	W,A,D	-10°C to +60°C
Model code		Tamb																				
9th digit	13th digit																					
A,B,D,J	Y,G,H,J,S,T,K	-40°C to +85°C																				
L,P,1,2	Y,G,H,J,S,T,K	-20°C to +80°C																				
Q,S,4,5	Y,G,H,J,S,T,K	-20°C to +60°C																				
E,F,H,K	Y,G,H,J,S,T,K	-40°C to +60°C																				
-	W,A,D	-10°C to +60°C																				

Authorities	Flameproof
ATEX	<p>Ex II 2 GD Ex d IIC T6 IP66/67 T85°C Tamb = -40°C to +65°C Ex d IIC T5 IP66/67 T100°C Tamb = -40°C to +85°C</p>
Factory Mutual	<p>Class I Div.1 Groups B, C, D T6 Type 4X Class II III Div.1 Groups E, F, G T6 Type 4X Tamb max = +60°C</p>
CSA	<p>Class I Div.1 Groups C, D Class II Div.1 Groups E, F, G Class III Div.1</p> <p>Note) "Seal Not Required" enclosure is allowed.</p>
TIIS	<p>Ex do IIB+H₂ T4 Tamb max = +60°C Maximum process temp. = +120°C</p>
IECEx Scheme	<p>Ex d IIC T5 IP66/67 Tamb = -40°C to +85°C Ex d IIC T6 IP66/67 Tamb = -40°C to +65°C</p>
NEPSI	<p>Ex d IIB+H₂ T6 Tamb = -40°C to +60°C</p>

Authorities	Type n Nonincendive																					
ATEX (pending)	<p>Ex II 3 GD EEx nL IIC T5 Tamb = -40°C to +50°C EEx nL IIC T4 Tamb = -40°C to +70°C</p> <p>Specific Parameters: Model without arrester: Ui=42.4V, li=113mA, Pi=1W, Ci=25.18nF, Li=0.694mH Model with arrester: Ui=32V, li=113mA, Pi=1W, Ci=35.98nF, Li=0.694mH</p> <p>EEx nAL IIC T5 Tamb = -40°C to +50°C EEx nAL IIC T4 Tamb = -40°C to +70°C</p> <p>Specific Parameters: Model without arrester: Umax=42.4V, Imax=113mA, Pmax=1W Model with arrester: Umax=32V, Imax=113mA, Pmax=1W</p>																					
Factory Mutual (pending)	<p>Class I II III Div.2 Groups A, B, C, D, F, G T4 Entity Type 4X</p> <table border="1"> <thead> <tr> <th colspan="2">Model code</th> <th>Tamb</th> </tr> <tr> <th>9th digit</th> <th>13th digit</th> <th></th> </tr> </thead> <tbody> <tr> <td>A,B,C,D,J</td> <td>Y,G,H,J,S,T,K</td> <td>-40°C to +85°C</td> </tr> <tr> <td>L,P,M,1,2,3</td> <td>Y,G,H,J,S,T,K</td> <td>-20°C to +80°C</td> </tr> <tr> <td>Q,S,N,4,5,6</td> <td>Y,G,H,J,S,T,K</td> <td>-20°C to +60°C</td> </tr> <tr> <td>E,F,G,H,K</td> <td>Y,G,H,J,S,T,K</td> <td>-40°C to +60°C</td> </tr> <tr> <td>-</td> <td>W,A,D</td> <td>-10°C to +60°C</td> </tr> </tbody> </table>	Model code		Tamb	9th digit	13th digit		A,B,C,D,J	Y,G,H,J,S,T,K	-40°C to +85°C	L,P,M,1,2,3	Y,G,H,J,S,T,K	-20°C to +80°C	Q,S,N,4,5,6	Y,G,H,J,S,T,K	-20°C to +60°C	E,F,G,H,K	Y,G,H,J,S,T,K	-40°C to +60°C	-	W,A,D	-10°C to +60°C
Model code		Tamb																				
9th digit	13th digit																					
A,B,C,D,J	Y,G,H,J,S,T,K	-40°C to +85°C																				
L,P,M,1,2,3	Y,G,H,J,S,T,K	-20°C to +80°C																				
Q,S,N,4,5,6	Y,G,H,J,S,T,K	-20°C to +60°C																				
E,F,G,H,K	Y,G,H,J,S,T,K	-40°C to +60°C																				
-	W,A,D	-10°C to +60°C																				
CSA (pending)	<p>Class I Div.2 Groups A, B, C, D Class II Div.2 Groups E, F, G Class III Div.2</p> <p>Temp Code T5 Tamb max = +50°C Temp Code T4 Tamb max = +70°C</p> <p>Entity Parameters: Vmax=28V, Ci=25.18nF (Without Arrester), Ci=35.98nF (With Arrester), Li=0.694mH</p>																					

⚠ Caution on Safety

*Before using this product, be sure to read its instruction manual in advance.

Fuji Electric Systems Co., Ltd.

Sales Div. III, International Sales Group
Global Business Group

Gate City Ohsaki, East Tower, 11-2, Osaki 1-chome,
Shinagawa-ku, Tokyo 141-0032, Japan

<http://www.fesys.co.jp/eng>

Phone: 81-3-5435-7280, 7281 Fax: 81-3-5435-7425

<http://www.fic-net.jp/eng>